

CHARACTERISTICS

ELECTRICAL

RATINGS:
 10.1 AMPS AT 125 VAC RESISTIVE
 DWV: 1050 VRMS
 ELECTRICAL LIFE: 25,000 CYCLES

MECHANICAL

MECHANICAL LIFE: 100,000 CYCLES
 SUBMERSION: IP68 PER IEC 529

PHYSICAL

BASE MATERIAL: THERMOPLASTIC
 BUTTON MATERIAL: BLACK THERMOPLASTIC
 CASE MATERIAL: BLACK THERMOPLASTIC
 TERMINAL MATERIAL: BRASS ALLOY

MARKING:

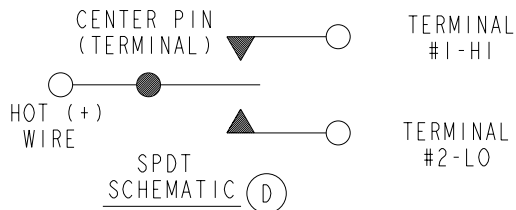
OTTO CONTROLS
 K100000167
 10.1A 125 VAC
 DATE CODE (YYWW)
 UL & CSA LOGOS

MOUNTING HOLE

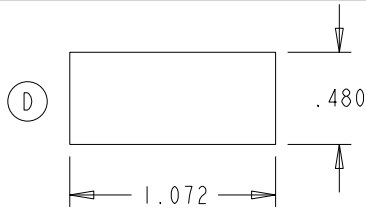
PANEL THICKNESS: .025 MIN. - .187 MAX.

NOTES: (D)

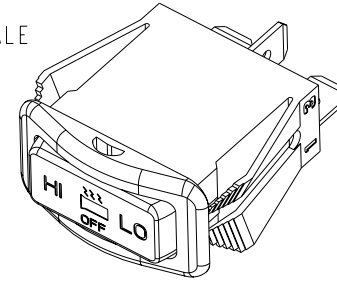
1. WHEN SWITCH IS ON HI, CENTER TERMINAL (HOT WIRE) IS CONNECTED TO TERMINAL #1
2. WHEN SWITCH IS ON LO, CENTER TERMINAL (HOT WIRE) IS CONNECTED TO TERMINAL #2



REF: KIABFAAAAA MOD.



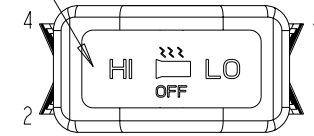
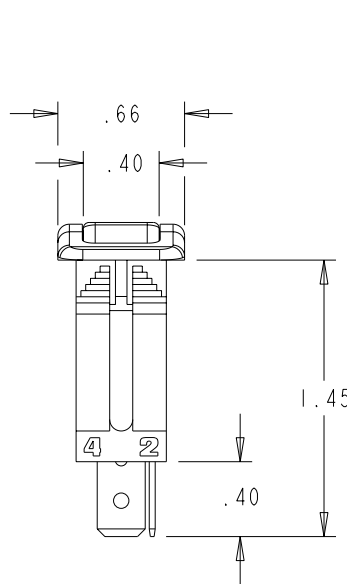
(D) SCALE 1:1



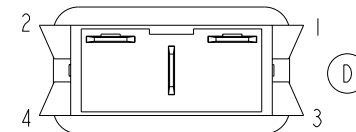
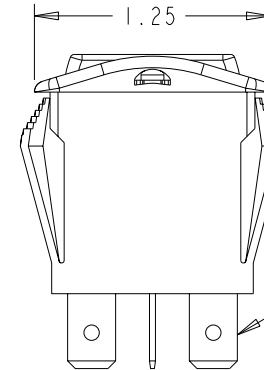
K100000167

REV	OCN #	DATE	APR
A	017244	14 APR 03	TP
B	017522	05 MAY 03	TP
C	017891	02 JUN 03	TP
D	018413	30 JUN 03	BJF

LEGENDS ARE NOT BACK LIT



TERMINAL I.D.; FOR REF. ONLY



OTTO CONTROLS
 DIVISION OF
OTTO ENGINEERING INC.
 CARPENTERSVILLE, ILLINOIS USA

DESCRIPTION

K1, SPDT, ROCKER SWITCH
 HI - LO

MANUFACTURING

SPC

UNLESS OTHERWISE SPECIFIED:
 DIMENSIONS ARE IN INCHES.
 TOLERANCES ARE AS LISTED.
 MUST BE FREE FROM BURRS
 AND SHARP EDGES.

TOLERANCES
 .XX ±.03
 .XXX ±.010
 ANGLES ±2°
 DO NOT SCALE DRAWING.
 THIRD ANGLE PROJECTION

THIS DOCUMENT IS THE CONFIDENTIAL
 PROPERTY OF OTTO ENGINEERING, INC..
 IT IS PROVIDED ON A RESTRICTED
 BASIS AND IS NOT TO BE USED IN ANY
 WAY DETRIMENTAL TO THE INTERESTS
 OF OTTO ENGINEERING, INC..

DRWN. DLN	SIZE	FSCM NO	DRAWING NO.	REV.
CHKD. TP	A	21649	K100000167	D
APPD. SM				
DATE 14-Apr-03	WT.	Scale 1:1	Sheet 1 OF 1	